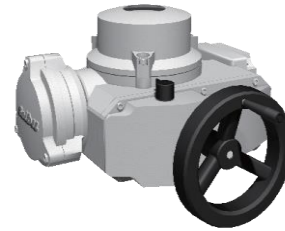


SRJ



Model		SRJ-010	SRJ-020	SRJ-060	SRJ-1	SRJ-2
Allowable Torque (Nm)		125	250	600	1,000	2,000
Operating Time (sec/90°)	50Hz	9/18	18/36	18/36	18/36	36/72
	60Hz	7.5/15	15/30	15/30	15/30	30/60
Allowable Valve Rod Diameter (mm)		28	28	42	60	60
Flange size		F07	F07	F10	F14	F14
Motor	Output(W)	40	40	100	200	200
	Power-Supply (V)	1-phase 100/200 3-phase 200/400				
	Insulation Class	B, F (Class H is available as option)				
	Brake	Permanent brake included				
	Thermal protector	Built-in				
Mass(kg)		13	13	18	40	40
Position Detection		Mechanical limit switch				
Torque Detection		Worm motion sensing				
Position Limit Switch		Microswitch RLS(1a1b),LLS(1a1b)				
Torque Switch		Microswitch RTS(1a1b),LTS(1a1b)				
Indicator		Pointer : OPEN~CLOSE				
Manual/Electric switching		Auto return type, with a handle				
Explosionproof (Option)		Exd II BT4			Exd II BT4 (Not available for Seitroller)	
Ambient Temperature		-10~60°C (Option : 80°C)				
Protection Structure		IP68				
Coating		Standard color coating (Munsell N8)				

*Dimensions and shape are subject to slight change without notice.

Electronic Control Equipment Seitroller

Seitroller control a valve proportionally (with Seimitter function too) with comparative expansion with valve opening, by receiving DC continuous signal from controller. (Only single-phase power supply is applicable.)

Seimitter

Seimitter converts a valve openness signal (resistance change of potentiometer) into a DC continuous signal (4~20 mA DC) to instruct opening.

